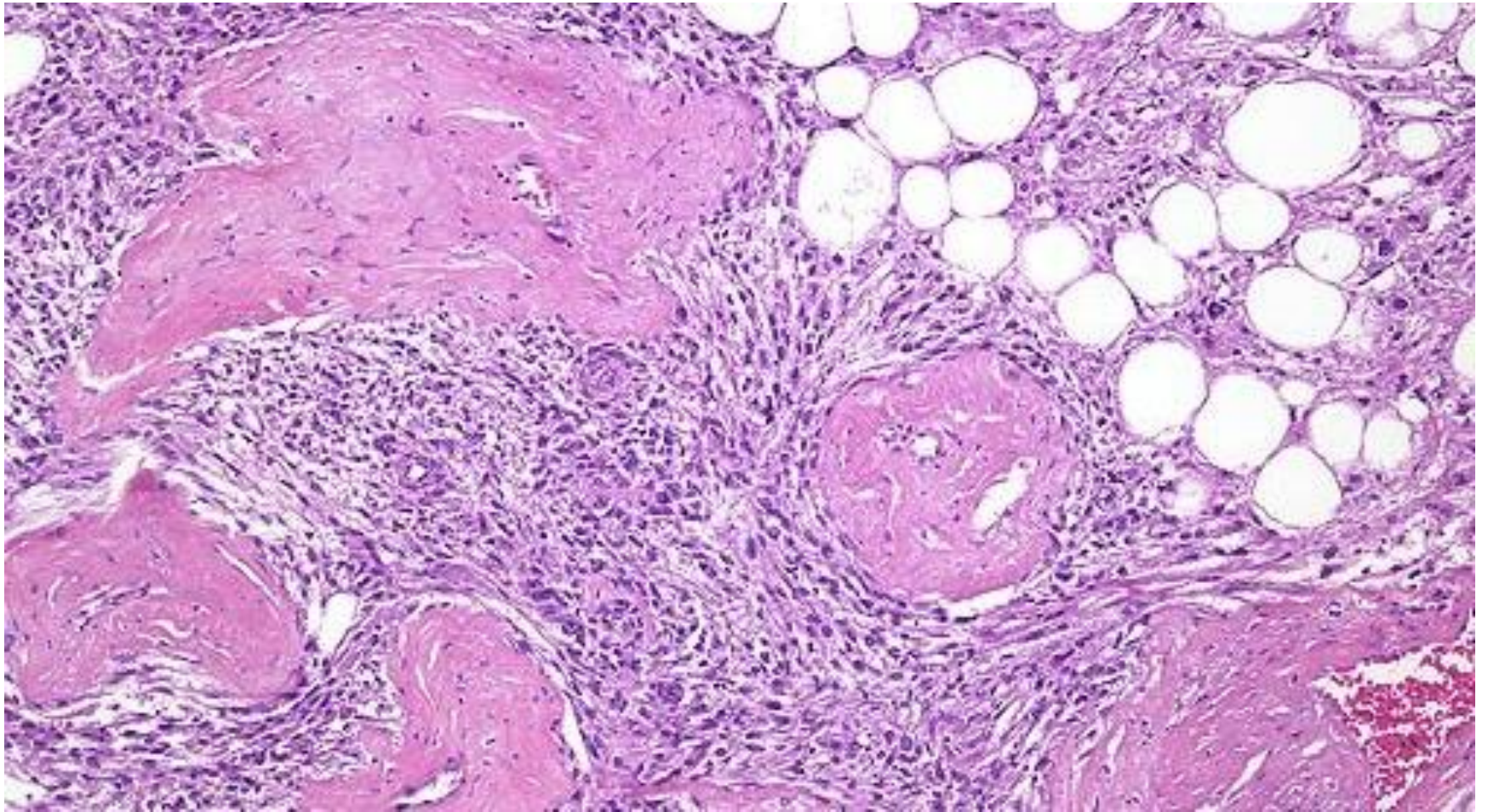


Hepatic Angiomyolipoma

Ali Winstanley

PEComa

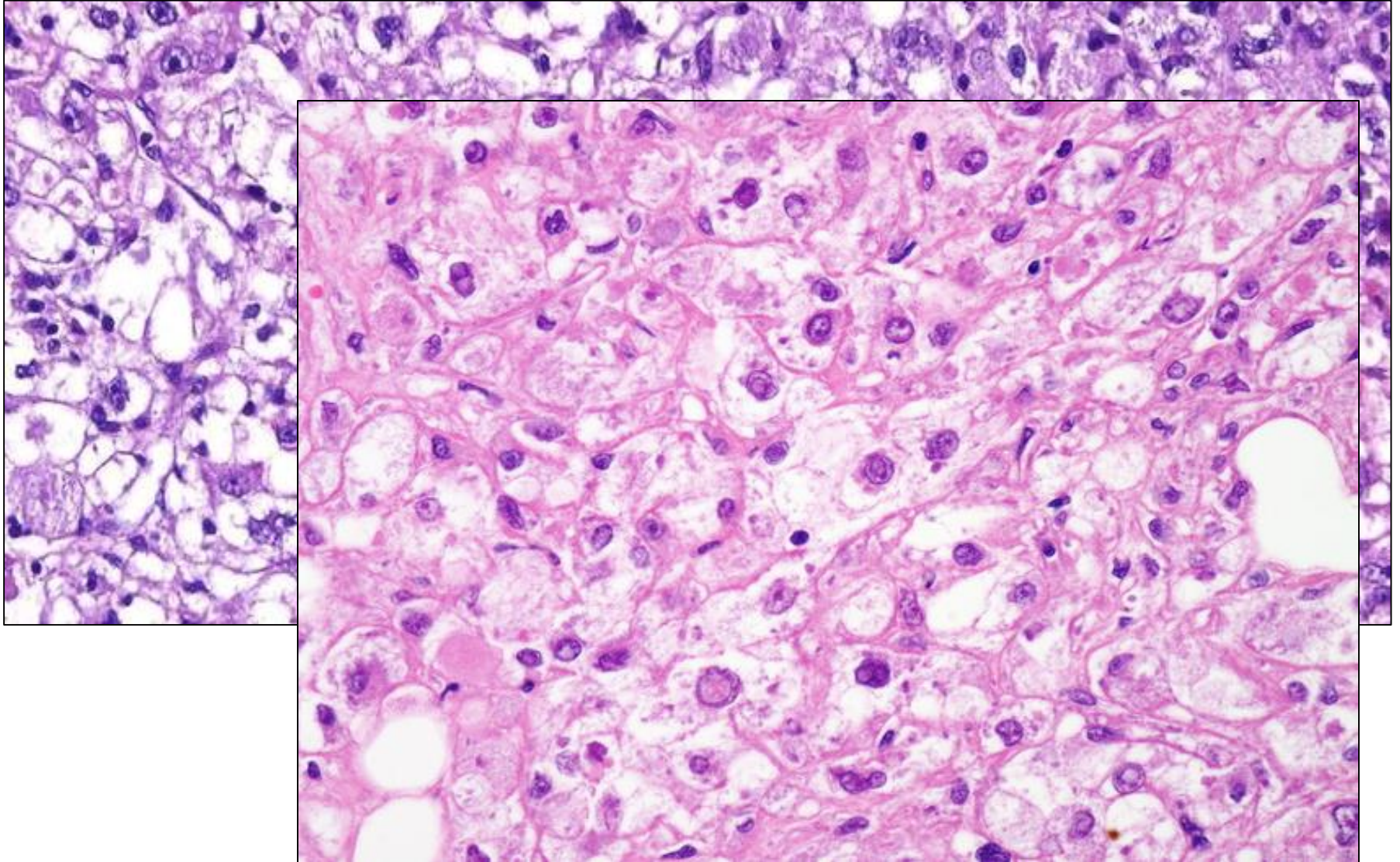


- Female > males
- 4-10% associated with tuberous sclerosis
- Background liver
- HMB45 and Melan A positive
- S100 negative

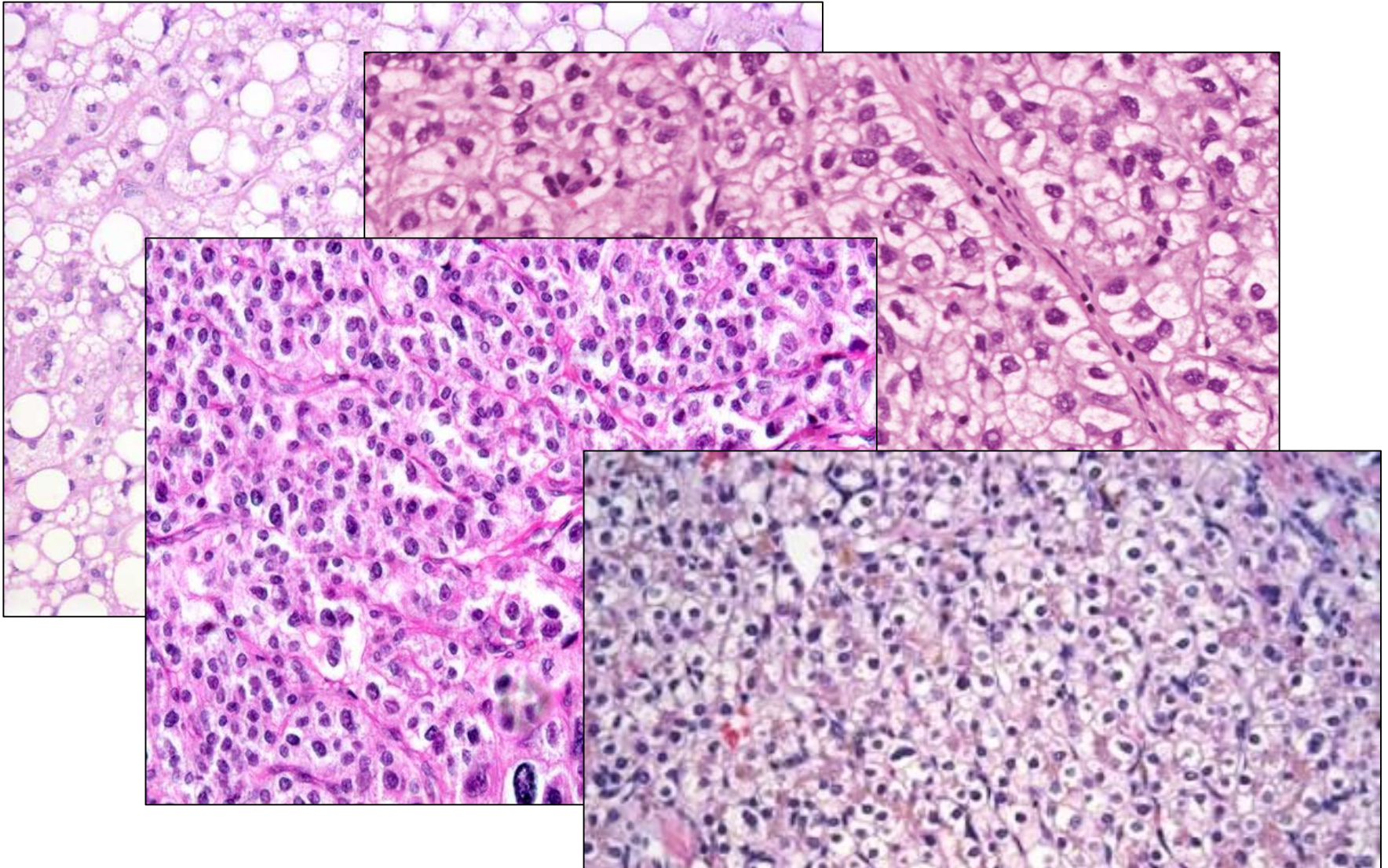
Variants described

- Classical/mixed
- Epithelioid
- Leiomyomatous
- Lipomatous
- Angiomatous/angiomyomatous/peliotic
- Oncocytic
- Pleomorphic
- Inflammatory

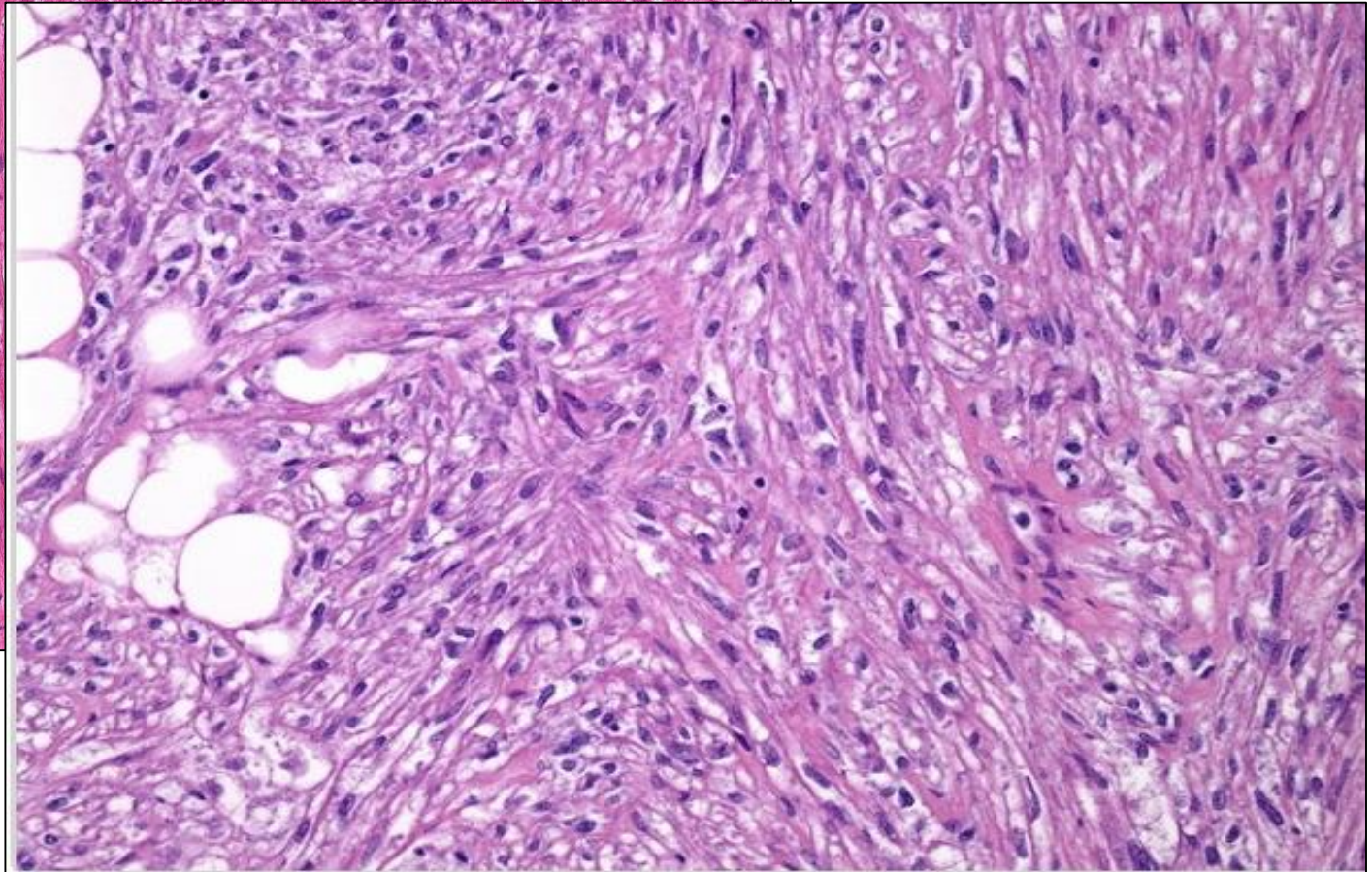
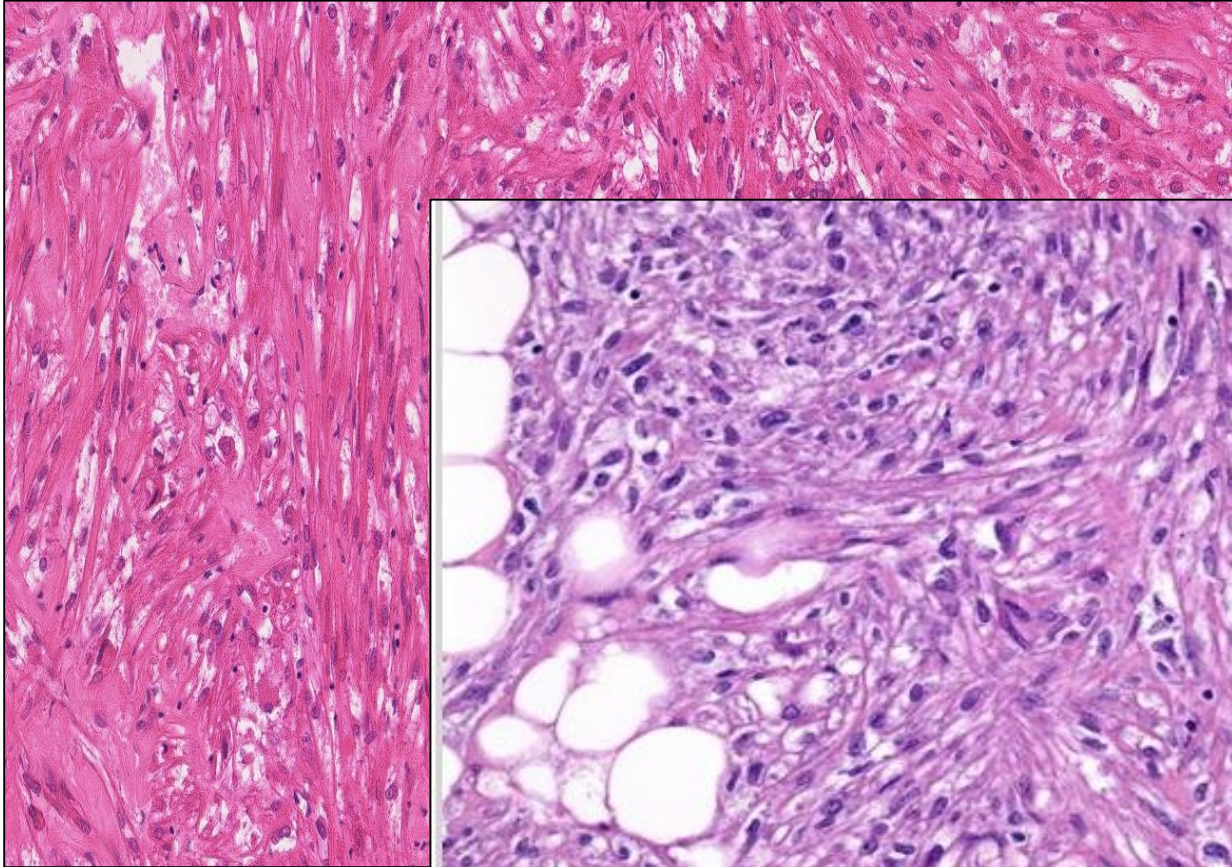
Epithelioid Variant



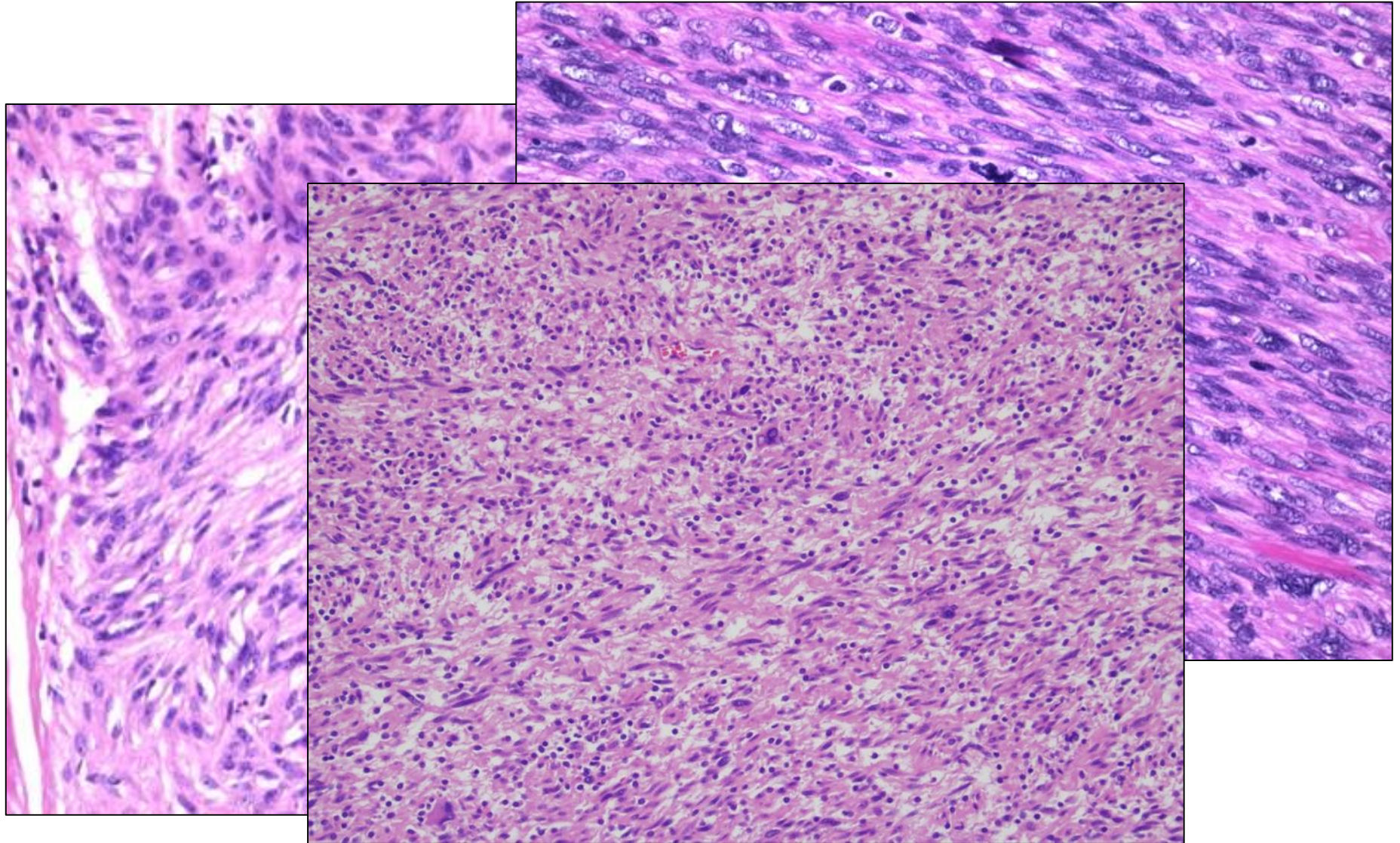
Differential diagnosis



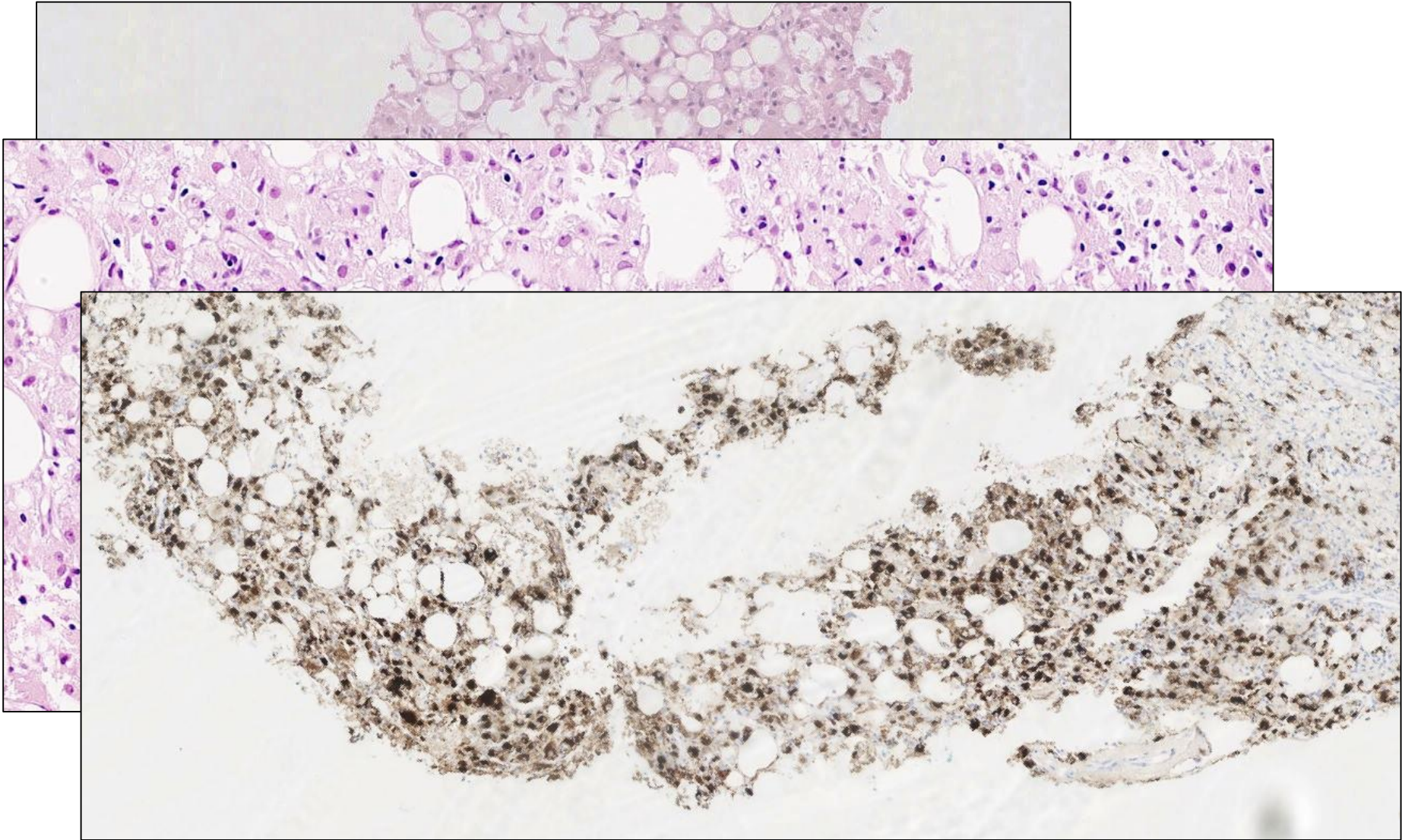
Leiomyomatous



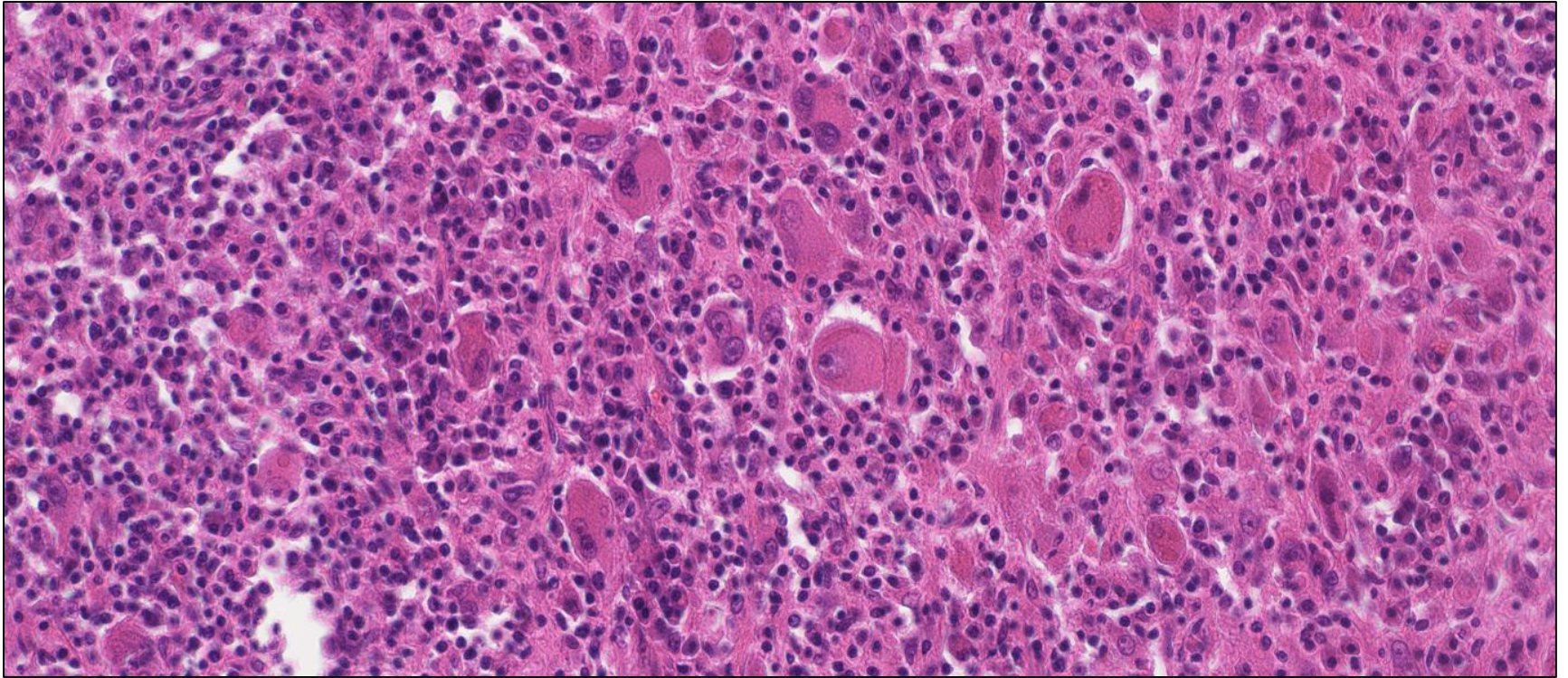
Differential diagnosis



Lipomatous variant



Inflammatory variant



Criteria for malignancy

- >5cm in size
- Infiltration into surrounding liver parenchyma
- High nuclear grade and cellularity
- > 1 mitoses per 50 hpf
- Necrosis
- Vascular invasion

